

LEGEND

- 1. Town Dock Area
- 2. Rendezvous Motel
- 3. Flamingo Motel
- 4. Holiday Motel
- 5. Snug Harbor Motel
- 6. Sea and Sky Portel (Shallow docking facilities available)

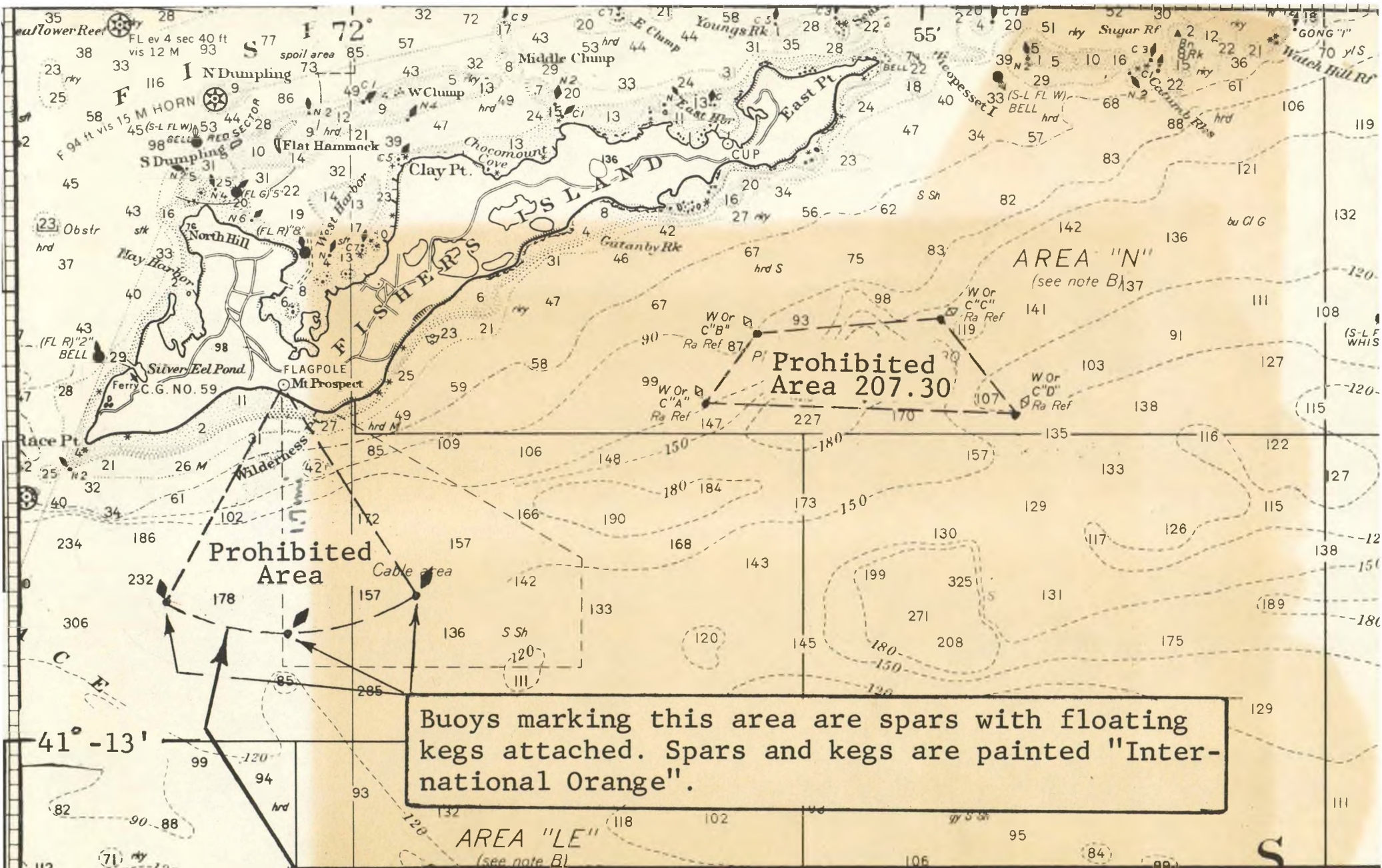
▶ Flags marking shoal area.

▨ Anchorage area for smaller boats.
(Deeper water off Yacht Club to be used by larger boats.)

There are a number of good eating places in the area of the Yacht Club and in the Town Dock Area.

Taxi service available.

DUTCH WINDMILL
FLAGSTAFF



Buoys marking this area are spars with floating kegs attached. Spars and kegs are painted "International Orange".

NOTICE TO MARINERS

"-----". The US Army Engrs. Research and Development Labs. test team will be conducting submarine pipeline construction tests in the cable area off Fishers Island Sound from 10 July to about 30 September 1961, 24 hours a day.-----This area is closed to navigation-----during these tests -----"

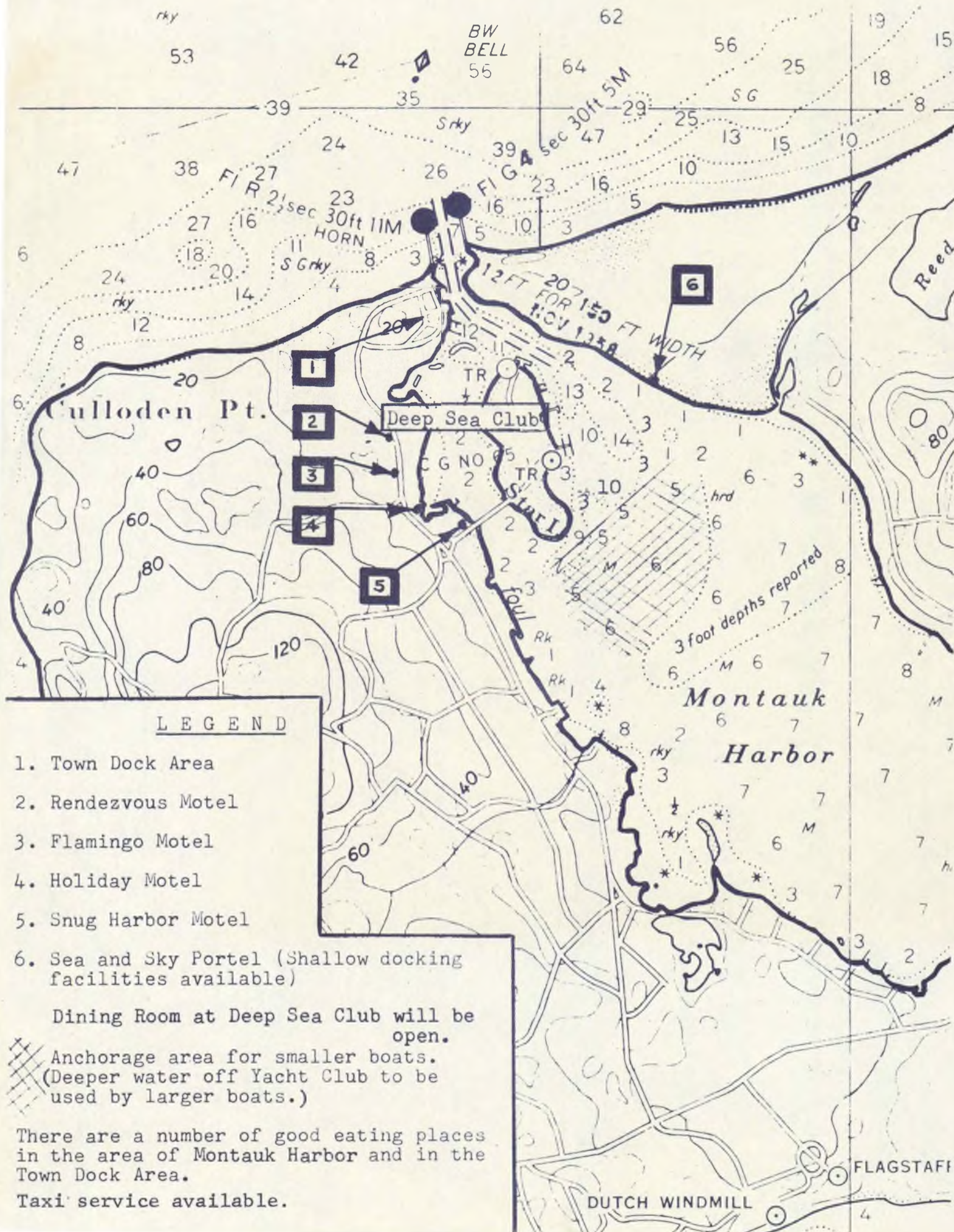
AREA "LW"
(see note B) 126

AREA "LE"
(see note B)

AREA "N"
(see note B) 137

Prohibited Area 207.30'


Prohibited Area



LEGEND

1. Town Dock Area
2. Rendezvous Motel
3. Flamingo Motel
4. Holiday Motel
5. Snug Harbor Motel
6. Sea and Sky Portel (Shallow docking facilities available)

Dining Room at Deep Sea Club will be open.

 Anchorage area for smaller boats. (Deeper water off Yacht Club to be used by larger boats.)

There are a number of good eating places in the area of Montauk Harbor and in the Town Dock Area.

Taxi service available.