

OFF SOUNDINGS CLUB

WALTER L. PRATT
Race Secretary
34 Jones Court
Norwich, CT 06360-6002

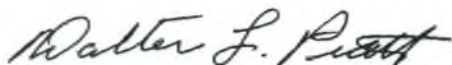
(860) 887-4865
wlpratt@snet.net

Board of Governors Report October 31, 2009

1. The New England Multihull Association did not respond to correspondence on shifting Class D results from Time on Time to Time on Distance. Therefore Class D results calculations continue to be Time on Time.
2. Participation decreased slightly in both series this year subsequent to last year's slight increase. There were 4 less boats in the Spring Series and 6 less boats in the Fall Series. Considering the Holiday week and change in schedule for the Fall Series I see no reason for concern.
3. Total Nonsuch entries for 2009 was 24:
 - a. Spring Series 14
 - b. Fall Series 10Although Nonsuch participation decreased from 36 in 2008 (19 and 17) the Nonsuch Special Class status should be renewed for 2010 as requested by Jack Lombard the Class Liaison.
4. Entry data from 2003 through 2009 along with graphs are attached for analysis.
5. For the Spring Series 23% of the entries were interactive entry forms from the web site; an additional 4% of the entries were submitted on forms downloaded from the web site.
6. When asked via email slightly less than 10% of the entries in the Spring Series opted out of having printed copies of the Sailing Instructions mailed to them. Considering we have to mail the party bracelets I believe the correct policy is sending a printed copy of the Sailing Instructions to each entry.
7. In the Spring Series confusion occurred among some of the contestants about which marks to round on the predefined course as the course is sub-divided into 2 courses; one for classes in the Long Group and another for classes in the Short Group. As a result we have removed predefined courses.
8. Spring Series Final Results were delayed one week as Quality Printers took a well deserved yet unpublished vacation.
9. Ten percent of the entries in the Fall Series submitted their entry with their Spring Series registration.

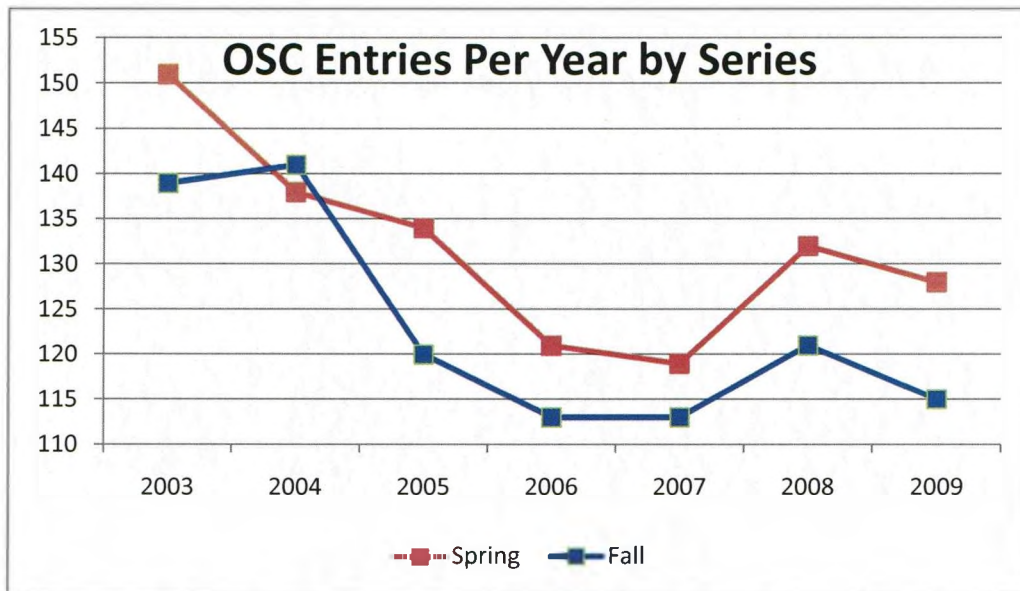
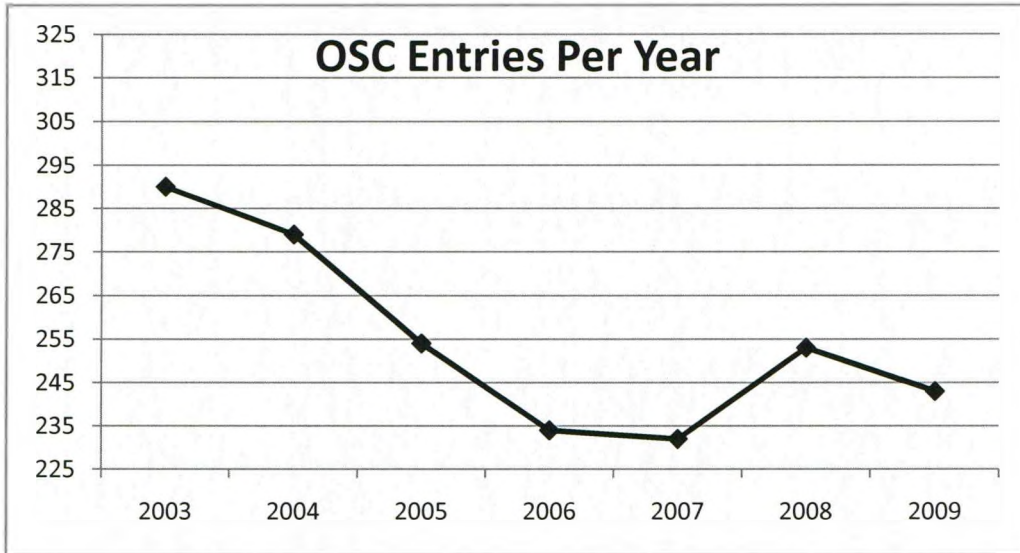
10. For the Fall Series 35% of the entries were interactive entry forms from the web site; an additional 10% of the entries were submitted on forms downloaded from the web site.
11. After registrations are recorded into the database a copy of the information is forwarded, via email or postal service, to each entry for review to ensure the information is correct. Although a response is requested typically about 25% fail to do so. For the Fall Series 26% failed to respond.
12. The Fall Series Sailing Instructions & Class/Entry List was published in black and white vice the traditional blue and white as the printer could not meet the production schedule. The mailing was delayed 2 days waiting for party bracelets.
13. The Fall Series Friday race was abandoned due to heavy weather.
14. Fall Series Final Results and Perpetual Trophies Results were delayed pending scoring and printing problems.
15. The 2010 and 2011 schedules are enclosed. The 2010 schedule has been revised to reflect the Board of Governors meeting on October 30th vice 23rd so as not to interfere with the US Sailing Annual Meeting. The 2011 schedule is subject to approval by the Board.
16. Printing costs for the entry forms could be reduced significantly by going to black and white forms vice the traditional multi-colored forms. I also believe we could reduce Sailing Instructions printing costs by going to black and white vice the traditional blue and white.
17. Our custom has been to mail a Notice of Race to each member when published. I believe we should survey our members about this practice to see if we can reduce expenses. Racing entries typically represent less than 25% of our members. The Notice of Race is available online.

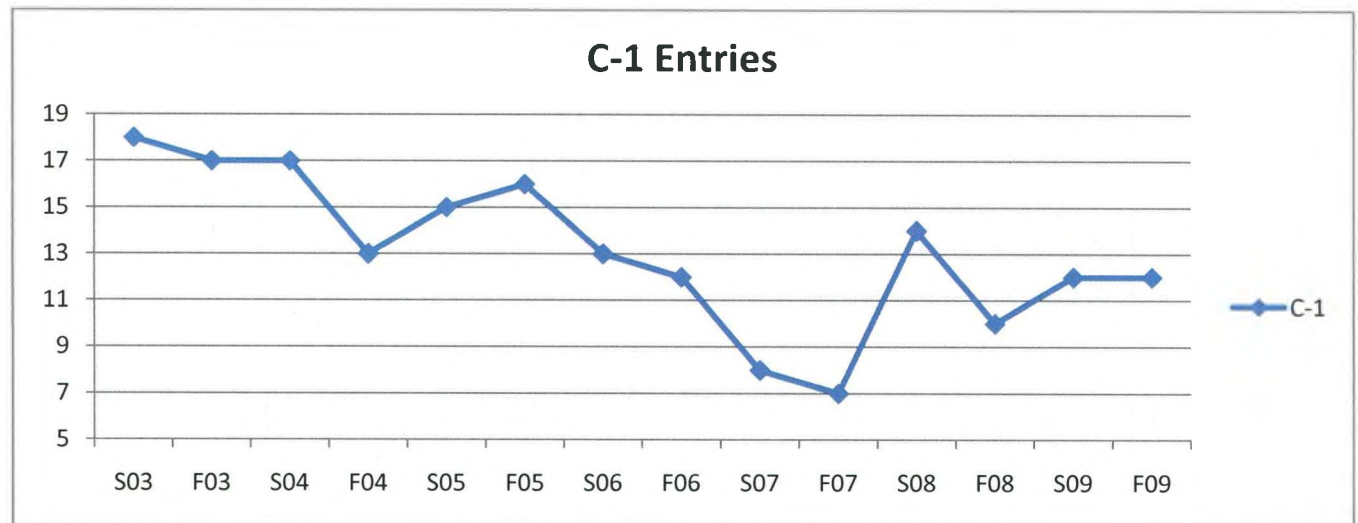
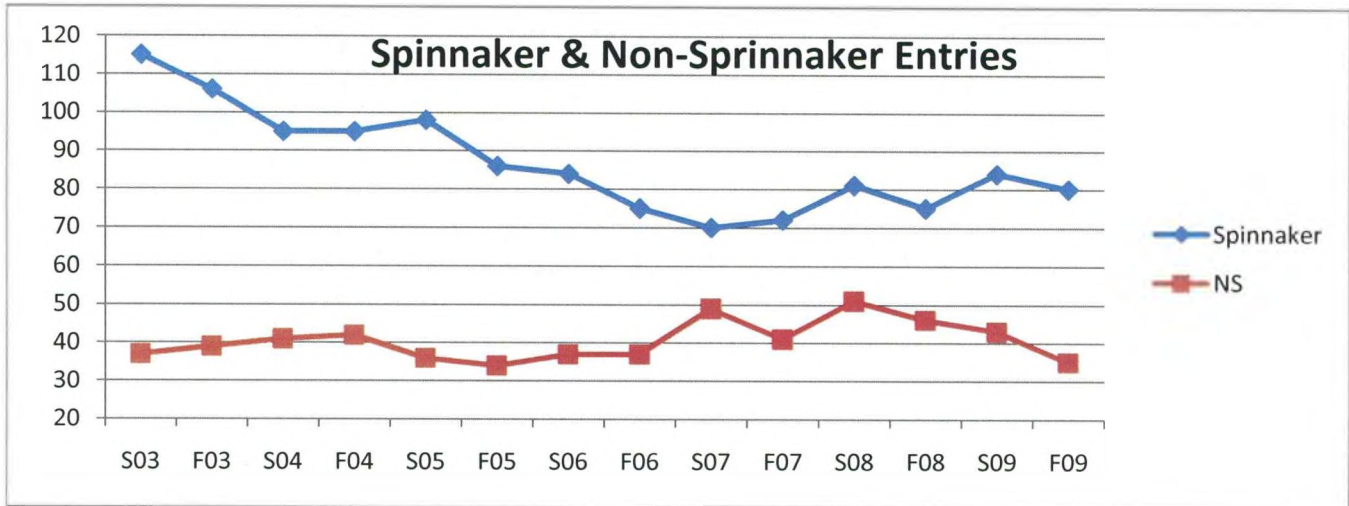
Sincerely,

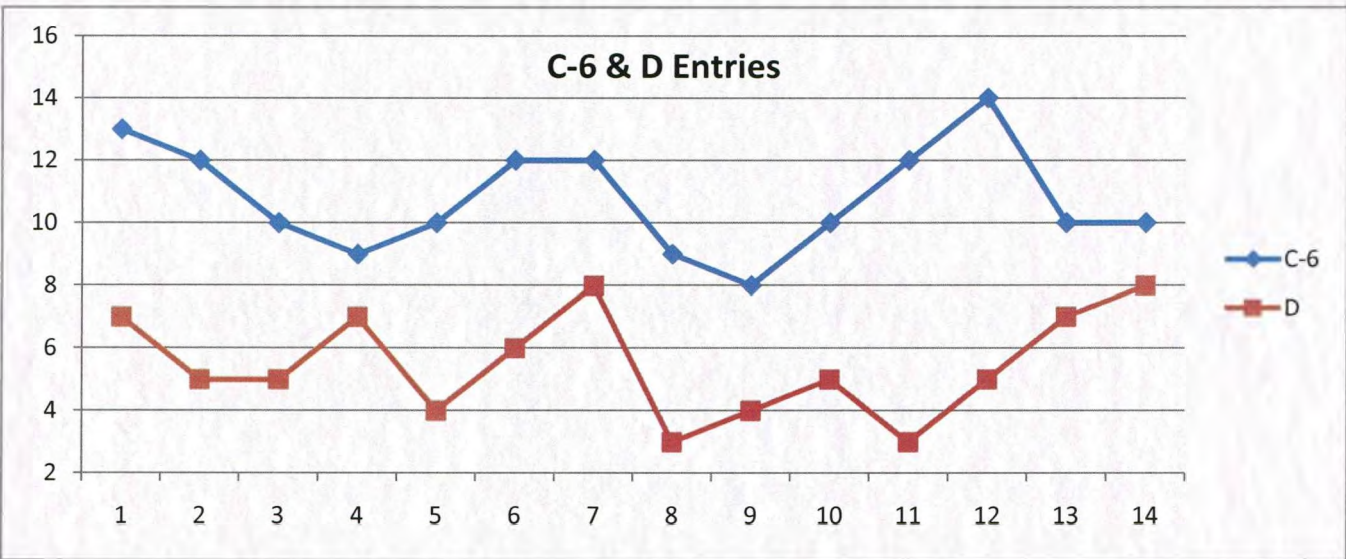
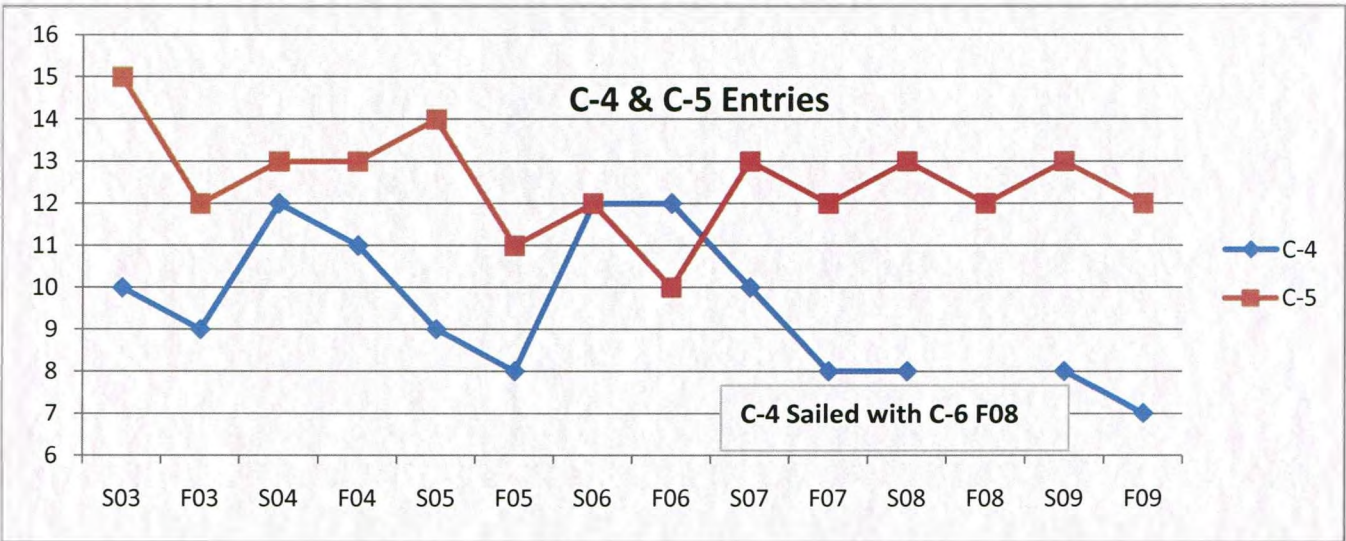
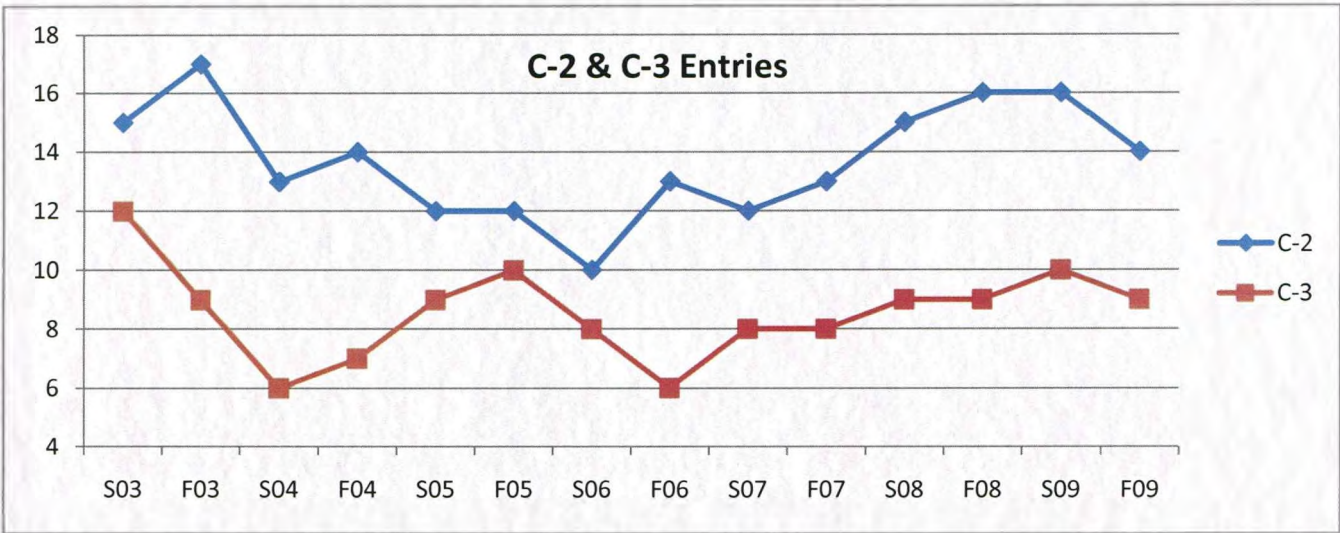
A handwritten signature in cursive script, reading "Walter L. Pratt".

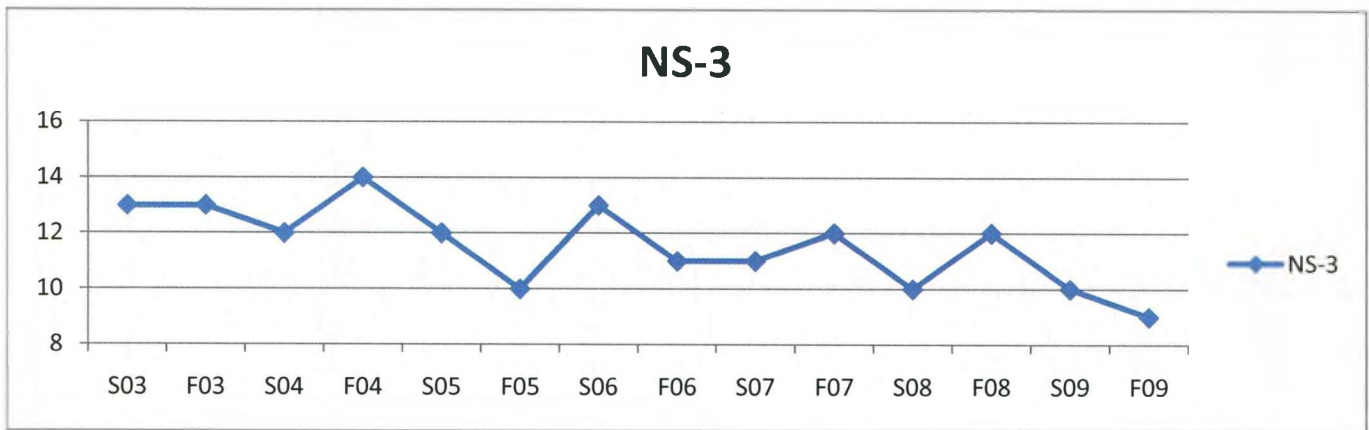
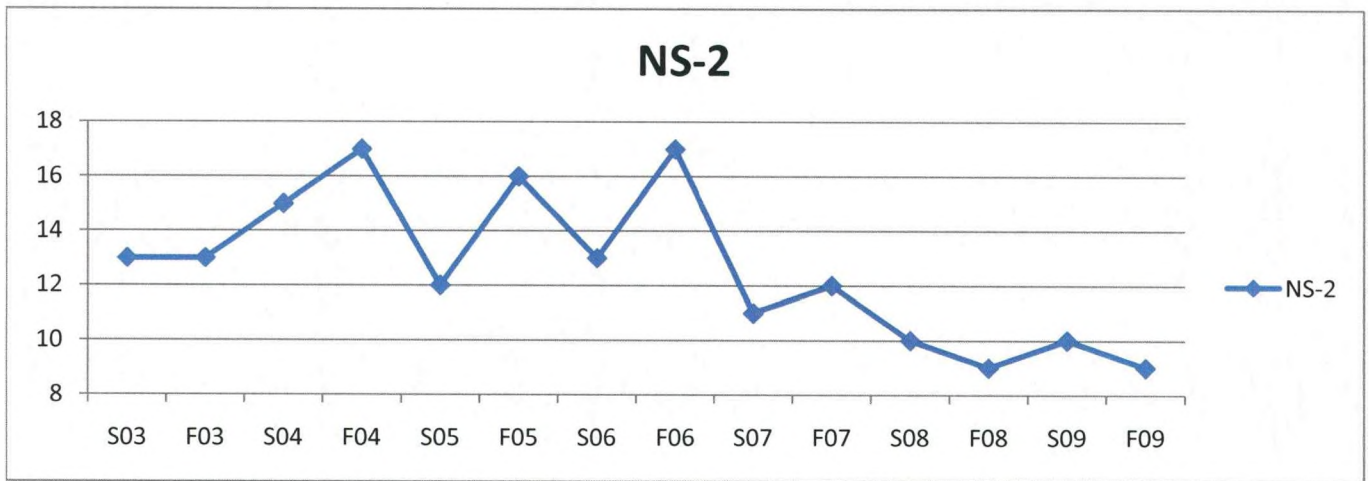
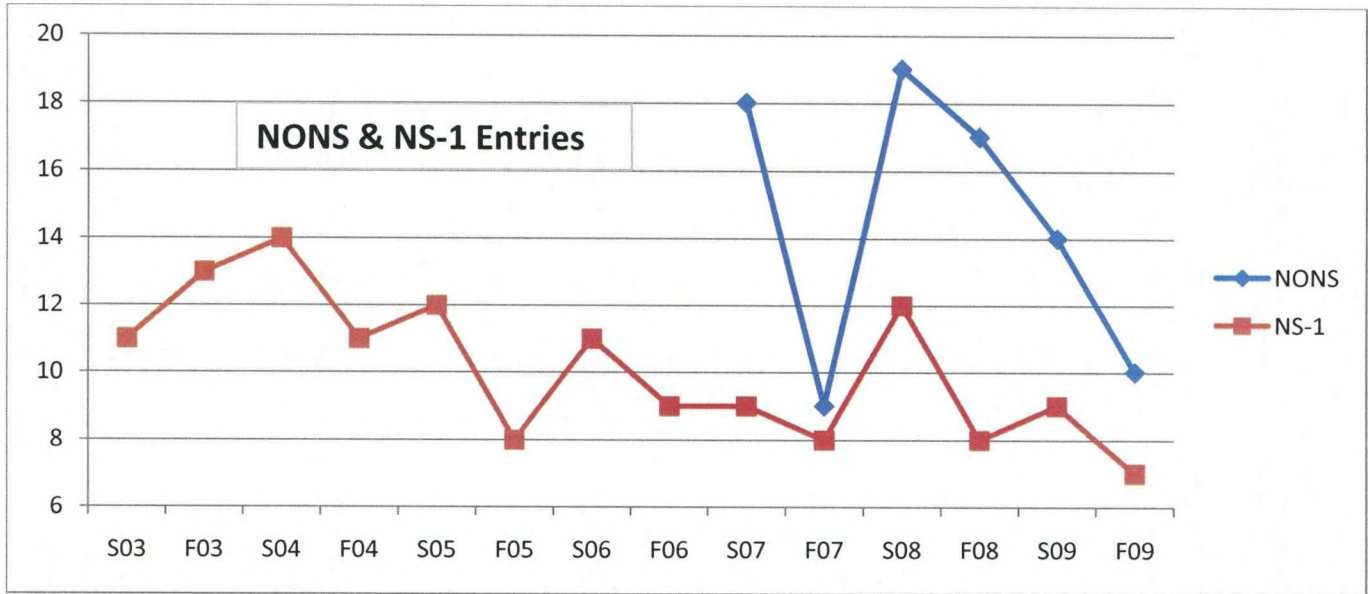
**Off Soundings Club
Entry Statistics**

Year	Spring	Fall	Total
2003	151	139	290
2004	138	141	279
2005	134	120	254
2006	121	113	234
2007	119	113	232
2008	132	121	253
2009	128	115	243

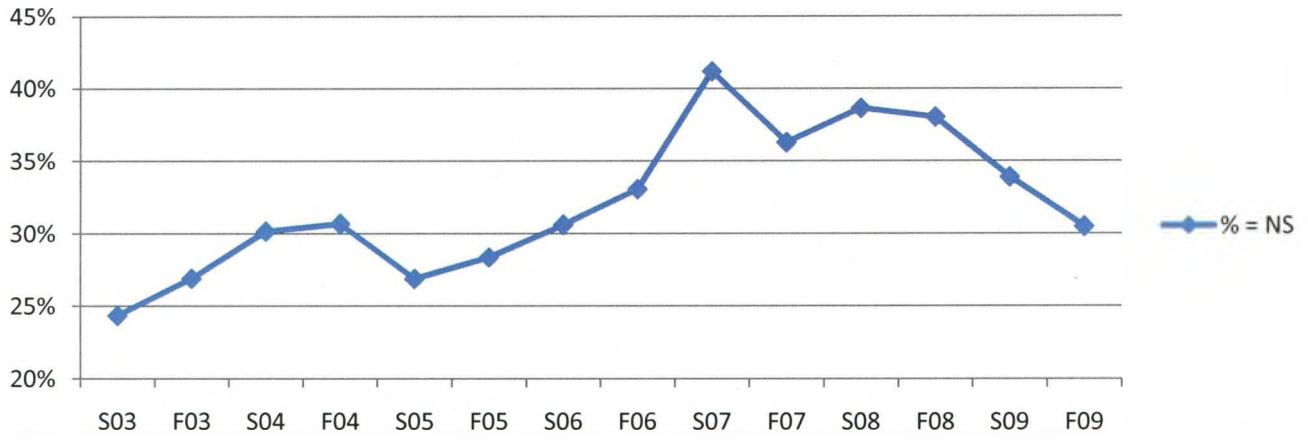




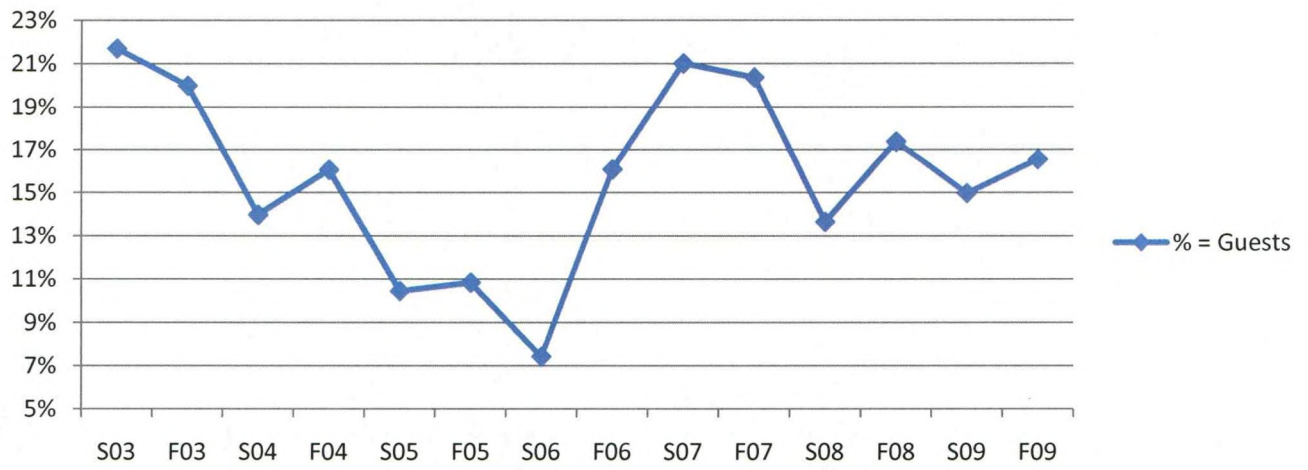




% = NS



% = Guests





OFF SOUNDINGS CLUB

2010 SCHEDULE OF EVENTS

January

15: Board of Governors meeting

April

3: Deadline for Shore Party reservations

8: Early decision Guest invitation cut-off

10: Board Of Governors meeting, Annual Meeting and Shore Party

23: Season Notice of Races posted to web site and mailed

May

6: Late Guest invitation cut-off

20: Spring Series closing date & deadline for new Measurement Certificates

25: Classification meeting

26: Classification of entries complete

June

4: Spring Series Sailing Instructions & Class/Entry List posted to web site and mailed (to entrants only)

11-12: Spring Series races: Watch Hill – Block Island

July

9: Spring Series Final Results posted to web site/mailed

August

12: Fall Series late Guest invitation cut-off

26: Fall Series closing date & deadline for new Measurement Certificates

31: Classification meeting

September

1: Classification of entries complete

10: Fall Series Sailing Instructions & Class/Entry List posted to web site and mailed (to entrants only)

17-18: Fall Series races: New London – Gardiners Bay

October

15: Fall series Final Results and Perpetual Trophy Results posted to web site and mailed

30: Board of Governors meeting



OFF SOUNDINGS CLUB

2011 SCHEDULE OF EVENTS

January

21: Board of Governors meeting

March

26 : Deadline for Shore Party reservations
31: Early decision Guest invitation cut-off

April

2: Board Of Governors meeting, Annual Meeting and Shore Party
15: Season Notice of Races posted to web site and mailed

May

5: Late Guest invitation cut-off
19: Spring Series closing date & deadline for new Measurement Certificates
24. Classification meeting
25: Classification of entries complete

June

3: Spring Series Sailing Instructions & Class/Entry List posted to web site and mailed (to entrants only)
10-11: Spring Series races: Watch Hill – Block Island

July

8: Spring Series Final Results posted to web site/mailed

August

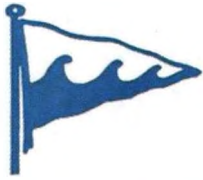
11: Fall Series late Guest invitation cut-off
25: Fall Series closing date & deadline for new Measurement Certificates
30. Classification meeting
31. Classification complete

September

9: Fall Series Sailing Instructions & Class/Entry List posted to web site and mailed (to entrants only)
16-17: Fall Series races: New London – Gardiners Bay

October

14: Fall series Final Results and Perpetual Trophy Results posted to web site and mailed
29: Board of Governors meeting



OFF SOUNDINGS CLUB

WALTER L. PRATT
Race Secretary
34 Jones Court
Norwich, CT 06360-6002

(860) 887-4865
wlpratt@snet.net

Compete*At

To review material on Compete*At go to their website at:

<http://www.compete-at.com/index.html>

As a result of a special meeting on 9/21 questions arose about privacy of information and pricing. Attached is a copy of the Compete*AT Privacy Policy as well as their Refund and Credit Policy. I posed the following questions to Compete*At (answers in italics):

1. Off Soundings membership consists of 3 types of membership; Regular Members, Senior Members who pay a reduced membership fee and Honorary Members who do not pay a membership fee. If Honorary Members are listed in our online database will we be charged \$2.00 fee on them? *Three membership levels - We do not differentiate between the different membership levels you set up in the system. So all three categories would be charged.*
2. Additionally Off Soundings invites guest to participate in their regattas. These guests are integrated into our database to facilitate email and regular mail communications. If guests are listed in our online database will we be charged \$2.00 fee on them? *Guests - After reading this question I think you would be using our Event Manager product for your regattas. So these people would not be listed on your membership role and not be charged. You could then use the event product for communications. That means we would be charged for listing guests in the database.*
3. Members who do not pay their dues typically remain in our database for 2 years. Will we be charged a \$2.00 fee for members who not pay their dues? *Expired Members - We charge you for all non archived members. You can set when they get archived. So in this case we would charge you for these expired members.*
4. Registration for an Off Soundings regatta has 2 cost components: a flat entry fee and per person cost for social activities. Is the 5% charge imposed on just the entry fee or on all fees? *Entry Fee - We charge you 5% on all fees associated with events.*
5. Off Soundings events are restricted to members and invited guests. Does Regatta Manager provide for limiting registration to our restricted list? *Member Only Events - We are currently working on a feature that will allow you to configure an event and only accept entries from members. This will be release some time over the winter. However many clubs set up events and turn on the Approval option. That way they review each entry and then approve or reject based on their membership.*

6. Is it possible to register online for a regatta and submit a check payment directly to Off Soundings to avoid the credit card transaction fee? *Checks - Yes. The system allows for members sending checks directly to the club (and therefore there is no CC processing fees). This leaves us with the opportunity to offer a discount to members who pay us directly by check.*

Costs:

To cover the costs of Event/Regatta Manager and the Membership Manager products I devised the following schedule:

**Event/Regatta
Manager**

	Existing	+ 5%	+3.35%	Charge	Net Increase	Net Increase %	Net Gain/Loss
Entry Fee	\$50.00	\$52.50	\$54.26	\$55.00	\$5.00	10%	\$0.74
Party Fee per person	\$10.00	\$10.50	\$10.85	\$11.00	\$1.00	10%	\$0.15

**Membership
Manager**

	Existing	+ \$2 Fee	+3.35%	Charge	Net Increase	Net Increase %	Net Gain/Loss
Dues	\$40.00	\$42.00	\$43.41	\$44.00	\$4.00	10%	\$0.59
Dues	\$50.00	\$52.00	\$53.74	\$55.00	\$5.00	10%	\$1.26

Should we have an evaluation done by Dunn & Bradstreet, or a credit report by a firm such as Equifax? Should we solicit information from the Better Business Bureau?

Sincerely,

Walter L. Pratt



online event registration and member management

Try **ASAP** Now

[HOME](#) [MANAGE EVENTS ONLINE](#) [MANAGE MEMBERS ONLINE](#) [PRODUCTS](#) [PRICING](#) [ABOUT US](#) [SUPPORT](#) [CONTACT](#)

Privacy Policy

The Privacy Policy below governs your Passport account and any information you provide on this site.

Overview

In order to operate the Compete-At service and to reduce the risk of fraud, Compete-At ("Compete-At" or "we") must ask you to provide us information about yourself and your credit card and/or bank account. This Privacy Policy describes the information we collect and how we use that information.

Compete-At takes the privacy of your personal information very seriously and will use your information only in accordance with the terms of this Privacy Policy. We will not sell or rent your personally identifiable information or a list of our customers to third parties. However, as described in more detail in below, there are limited circumstances in which some of your information will be shared with third parties, under strict restrictions, so it is important for you to review this Privacy Policy. This Privacy Policy applies to all services that are hosted on the www.Compete-At.com Web site, whether the services are offered by Compete-At, or by its affiliates. By accepting the Privacy Policy and User Agreement in registration, you expressly consent to our use and disclosure of your personal information in the manner described in this Privacy Policy. This Privacy Policy is incorporated into and subject to the terms of the Compete-At User Agreement. This Privacy Policy took effect on September 1, 2005.

Please note that your personal information will be stored and processed on our computers in the United States. The laws on holding personal data in the United States may be less stringent than the laws of your country but Compete-At will hold and transmit your personal information in a safe, confidential and secure environment. If you object to your personal information being transferred or used as described in this Privacy Policy, please do not register for the Compete-At service.

Notification of Changes

This policy may be revised over time as new features are added to the Compete-At service or as we incorporate suggestions from our customers. If we are going to use or disclose your personally identifiable information in a manner materially different from that stated at the time we collected the information, you will have a choice as to whether or not we use or disclose your information in this new manner. Any material changes will be effective only after we provide you by e-mail with at least 30 days' notice of the amended Privacy Policy (if you have closed your Passport account, you will not be contacted to notify you of the amended Policy and your personal information will not be used or disclosed in this new manner).

We will post the amended Privacy Policy prominently on our Web site so that you can always review what information we gather, how we might use that information, and whether we will disclose it to anyone. Please check the Compete-At Web site at www.Compete-At.com at any time for the most current version of our Privacy Policy.

The Compete-At Web site includes links to third party Web sites. These sites are governed by their own privacy statements, and Compete-At is not responsible for their operations, including but not limited to their information practices. Users submitting information to or through these third party Web sites should review the privacy statement of these sites before providing them with personally identifiable information.

A Special Note About Children. Children are not eligible to use our service and we ask that minors (under the age of 18) do not submit any personal information to us or use the service.

Information We Collect

Required Information

To open a Passport account certain personal information fields are required. In order to make payments through Compete-At, you must provide credit card information.

Transaction Information

To process payments of event or membership fees, or store purchases, with your credit card we collect credit card type, card number, expiration date, billing address, and CCV number. This information is used only for processing of the transaction and for no other purpose. All credit card information is stored on a separate server not directly connected to the Internet using SSL based security.

Web Site Traffic Information

Because of the way that World Wide Web communication standards work, when you arrive at or leave the Compete-At Web site, we automatically receive the Web address of the site that you came from or are going to. We also collect information on which pages of our Web site you visit while you are on the Compete-At site, the type of browser you use and the times you access our Web site. We use this information only to try to understand our customers' preferences better and to manage the load on our servers, so as to improve our service and your experience with Compete-At. We do not track the Web sites that you visit after you leave the Compete-At site.

Customer Service Correspondence

If you send us correspondence, including e-mails and faxes, we retain such information in the records of your account. We will also retain customer service correspondence and other correspondence from Compete-At to you. We retain these records in order to measure and improve our customer service, and to investigate potential fraud and violations of our User Agreement. We may, over time, delete these records if permitted by law.

Questionnaires, Surveys and Profile Data

From time to time, we offer optional questionnaires and surveys to our users for such purposes as collecting demographic information or assessing users' interests and needs. The use of the information collected will be explained in detail in the survey itself. If we collect personally identifiable information from our users in these questionnaires and surveys, the users will be given notice of how the information will be used prior to their participation in the survey or questionnaire.

Our Use and Disclosure of Information

Internal Uses

We collect, store and process your personal information on servers located in the United States. We use the information we collect about you in order 1) to provide our services and process your transactions, 2) to provide customer service, 3) to improve our products and services. We give access to individually identifiable information about our users only to those employees who require it to fulfill customer service requests.

Disclosure to Third Parties Other Than Compete-At Customers

Compete-At will not sell or rent any of your personally identifiable information to third parties. Compete-At will not share any of your personally identifiable information with third parties except in the limited circumstances described below, or with your express permission. These third parties are limited by law or by contract from using the information for secondary purposes beyond the purposes for which the information is shared.

We share information with companies that help us process the transactions you request and protect our customers' transactions from fraud, such as sharing your credit card number with a service that screens for lost and stolen card numbers. We may disclose the information we collect, as described above, to companies that perform marketing services on our behalf. These companies are subject to confidentiality agreements with us and other legal restrictions that prohibit using the information except to market the specified Compete-At-related products or services, unless you have affirmatively agreed or given your prior permission for other uses.

We disclose information that we in good faith believe is appropriate to cooperate in investigations of fraud or other illegal activity, or to conduct investigations of violations of our User Agreement. For example, if we conduct a fraud investigation and conclude that one side has engaged in deceptive practices, we can give that person or entity's contact information (but not bank account or credit card information) to victims who request it.

We disclose information in response to a subpoena, warrant, court order, levy, attachment, order of a court-appointed receiver or other comparable legal process, including subpoenas from private parties in a civil action. We disclose information to your agent or legal representative (such as the holder of a power of attorney that you grant, or a guardian appointed for you).

We share aggregated statistical data with our business partners or for public relations. For example, we may disclose that a specific percentage of our users live in California. However, this aggregated information is not tied to personally identifiable information.

As with any other business, it is possible that Compete-At in the future could merge with or be acquired by another company. If such an acquisition occurs, the successor company would have access to the information maintained by Compete-At, including customer account information, but would continue to be bound by this Privacy Policy unless and until it is amended as described above.

We share your information with our parent, subsidiaries and joint ventures to help coordinate the services we provide to you, enforce our terms and conditions, and promote trust and safety.

Disclosure to National Governing Bodies and Handicap Organizations

Compete-At may provide information gathered to the National Governing Body, regional authority, international federation, etc. applicable to the event and/or where you are registered as a Passport customer. Compete-At may also provide information gathered to Handicap Organizations (including but not limited to IRC, PHRF, ORR). The information provided may include all information submitted and gathered except for payment information. Payment information shall be considered any information regarding payments made to enter an event or for subscription services, including, amounts, credit card information, and billing information. Information that may be provided will include team and personal information, results, and event specific information. We recommend that you check the privacy policies of your Governing Bodies as well as those of any Organizational Rules that you may compete under.

Disclosure to Club Essentials

Compete-At and Club Essentials have formed a Strategic Partnership that will allow users who have accounts on both systems to navigate between systems with out logging on and off. Users will be able to access information from either system when logged in. Compete-At will provide secure access to affected user's information to Club Essentials as part of this agreement. View club essentials privacy policy on this website: <http://www.clubessential.com>.

Disclosure to Event Organizers

By using any of our systems to enter an event you are authorizing Compete-At to provide your personal information to the event organizers for their use in managing and running that event. If you use our Store product to purchase an item, you are authorizing Compete-At to provide your personal information to the Store Vendor for use in processing your transaction and fulfill your order.

Disclosure by Event Website

As part of our Event Manager product event organizers can have our system generate various public web pages that can include some of your personal information. These pages include Entry Lists, Scratch Sheets and Results. This information includes (but is not limited to): your Name, Team Name, Score, Place, Division, Class, Grouping, etc.

Passport Public Profile

As part of Compete-At's Passport product the user can enable a Public Profile Page. This page, if enabled, and any information provided, will be accessible on the public Internet.

Our Contacts with Compete-At Customers

We communicate with users on a regular basis via e-mail to provide requested services, and we also communicate by phone to resolve customer complaints or investigate suspicious transactions. We also use your e-mail address to send you other types of communications that you can control, including the Compete-At Periodical newsletter, customer surveys and notice of special third-party promotions.

Internet Address Information

We use IP addresses, browser types and access times to analyze trends, administer the site, improve site performance and gather broad demographic information for aggregate use.

Use of Information and Our Services by Others

By entering into our User Agreement, Event Organizers agree that, with respect to other users' personally identifiable information that they obtain through the site or through a Compete-At-related communication or Compete-At-facilitated transaction, they will only use this information for: (a) Compete-At-related communications that are not unsolicited commercial messages, (b) using services offered through Compete-At (e.g. insurance, shipping and fraud complaints), and (c) any other purpose that such user expressly agrees to after adequate disclosure of the purpose(s).

In all cases, Event Organizers must provide users with the opportunity to remove themselves from your database and review any information they have collected about them. In addition, under no circumstances, except as defined in this Section, can they disclose personally identifiable information about another Compete-At user to any third party without our consent and the consent of such other user after adequate disclosure. Note that law enforcement personnel and other rights holders are given different rights with respect to information they access.

Spam

Compete-At does not tolerate spam. Therefore, without limiting the foregoing, you may not add a Compete-At user to your mail list (email or physical mail) without their express consent after adequate disclosure, even if said user has previously made a purchase from you. We strictly enforce our Anti-Spam Policy! To report Compete-At-related spam to Compete-At, please contact us.

Information Security

Compete-At is committed to handling your customer information with high standards of information security. Your credit card and bank account information are stored only in encrypted form on computers that are not connected to the Internet. We restrict access to your personally identifiable information to employees who need to know that information in order to provide products or services to you. We maintain physical, electronic and procedural safeguards that comply with federal regulations to guard your nonpublic personal information. We test our security systems regularly and also contract with outside companies to audit our security systems and processes.

The security of your Passport account also relies on your protection of your Passport password. You may not share your Passport password with anyone. Compete-At will never ask you to send your password or other sensitive information to us in an e-mail, though we may ask you to enter

this type of information on the Compete-At website, which will always have a URL beginning with <https://www.Compete-At.com/>.

Any e-mail or other communication requesting your password, asking you to provide sensitive account information via email, or linking to a website with a URL that does not begin with <https://www.Compete-At.com/> should be treated as unauthorized and suspicious and should be reported to Compete-At immediately. If you do share your Passport password with a third party for any reason, including because the third party has promised to provide you additional services such as account aggregation, the third party will have access to your account and your personal information, and you may be responsible for actions taken using your password. If you believe someone else has obtained access to your password, please change it immediately by logging in to your account at www.Compete-At.com/, and also contact us immediately.

Accessing and Changing Your Information

You can review the personal information you provided us and make any desired changes to such information, or to the settings for your Passport account, at any time by logging in to your account on the Compete-At Web site.

Advertising

We use third-party advertising companies to serve ads when you visit our website. These companies may use information (not including your name, address, email address, or telephone number) about your visits to this and other websites in order to provide advertisements about goods and services of interest to you. If you would like more information about this practice and to know your choices about not having this information used by these companies, [click here](#).

Google, a third party vendor, uses cookies to serve ads on this site. Google's use of the DART cookie enables it to serve ads to your users based on their visit to your sites and other sites on the Internet. Users may opt out of the use of the DART cookie by [visiting the Google ad and content network privacy policy](#).

Contacting Us

If you have any questions about this privacy statement, Compete-At's information practices, or your dealings with Compete-At, you can contact us using the contact information provided on our website [located here](#).

SOLUTIONS FOR: [Non-Profits](#) | [Camps](#) | [Sailing](#) | [Skiing](#) | [Running](#) | [Multisport / Triathlon](#) | [Cycling](#) | [Volleyball](#) | [Kitesurfing](#) | [Curling](#) | [Fencing](#) | [Racquetball](#)
[Paintball](#) | [Table Tennis](#) | [Cornhole](#) | [Curling](#) | [Archery](#) | [Fishing](#) | [Karting](#) | [Car Clubs](#) | [Motorcycle Clubs](#)

[About Us](#) | [Partners](#) | [Contact](#) | [Policies](#) | [Meeting](#) | [Blog](#) | [Subscribe to Newsletter](#)

© 2009 Compete-At.com All right reserved.

[Online Event Registration & Event Planning](#) | [Online Member Managemen for Clubs and Non-Profits](#) | [Online Athlete Profiles](#) | [Sign Up Now](#)


[Try A Submit Now](#)
[HOME](#) | [MANAGE EVENTS ONLINE](#) | [MANAGE MEMBERS ONLINE](#) | [PRODUCTS](#) | [PRICING](#) | [ABOUT US](#) | [SUPPORT](#) | [CONTACT](#)

Refunds & Credit Policy

Refunds for event participants will be issued at the sole discretion of the Event Organizer for a specific event.

In the event that a competitor is unable to compete in an event after they have entered and paid (either in whole or part) and would like a refund, the competitor must do one of the following:

1. Log into their account, proceed to the Payments page and click the Request Refund button. Once on the Request Refund page, the user needs to select one of the two options ("Request for withdrawal and complete refund" or "Request refund for the following items"). For the later the user will need to select the specific items and quantities for which they would like to be refunded. This is the fastest and most preferred method.
2. The competitor may contact the Event Organizer directly via email or phone. This contact information maybe shown on the events home page or contact us page at the discretion of the Event Organizer.
3. The competitor may contact Compete-At using the contact form provided at: http://www.compete-at.com/contact/contact_support.htm . Please include the entrants name, the team or yacht name (if applicable), the club and the event for which you would like the refund in your message. This message will then be forwarded to the Event Organizer.

Once the request has been made and received, the Event Organizer will review the request and Approve or Deny the request at their sole discretion and in accordance with their policies. The competitor will then be notified as to the decision of the Event Organizer by email (or by phone if the Event Organizer desires). The Competitor may also log into the system at any time during the process to check upon the status of the request. If the refund request is Approved a refund will be issued directly by the Event Organizer in the manner defined by their policies. If the refund request is denied, the competitor will be provided an explanation directly from the Event Organizer. **UNDER NO CIRCUMSTANCES WILL COMPETE-AT PROVIDE A CREDIT CARD REFUND DIRECTLY TO A PARTICIPANT.**

If an Event Organizer issues a refund the associated Credit Card Fees and Compete-At fees will not be refunded to the Event Organizer by Compete-At.

SOLUTIONS FOR: [Non-Profits](#) | [Camps](#) | [Sailing](#) | [Skiing](#) | [Running](#) | [Multisport / Triathlon](#) | [Cycling](#) | [Volleyball](#) | [Kitesurfing](#) | [Curling](#) | [Fencing](#) | [Racquetball](#) | [Paintball](#) | [Table Tennis](#) | [Cornhole](#) | [Curling](#) | [Archery](#) | [Fishing](#) | [Karting](#) | [Car Clubs](#) | [Motorcycle Clubs](#)

[About Us](#) | [Partners](#) | [Contact](#) | [Policies](#) | [Meeting](#) | [Blog](#) | [Subscribe to Newsletter](#)

© 2009 Compete-At.com All right reserved.

[Online Event Registration & Event Planning](#) | [Online Member Management for Clubs and Non-Profits](#) | [Online Athlete Profiles](#) | [Sign Up Now](#)